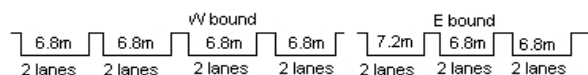
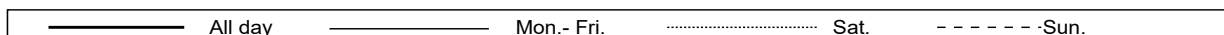
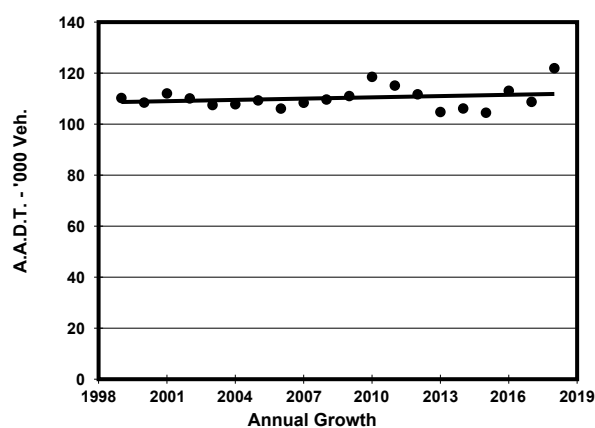
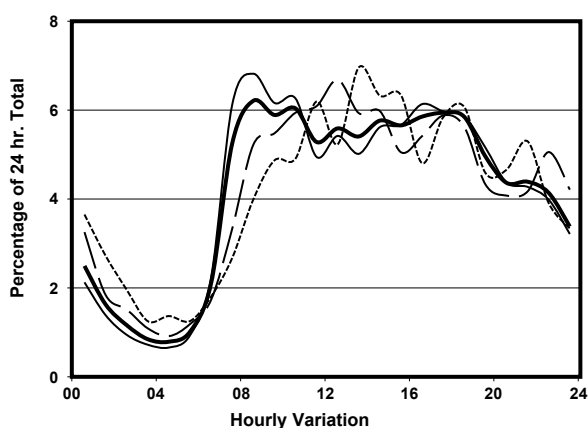
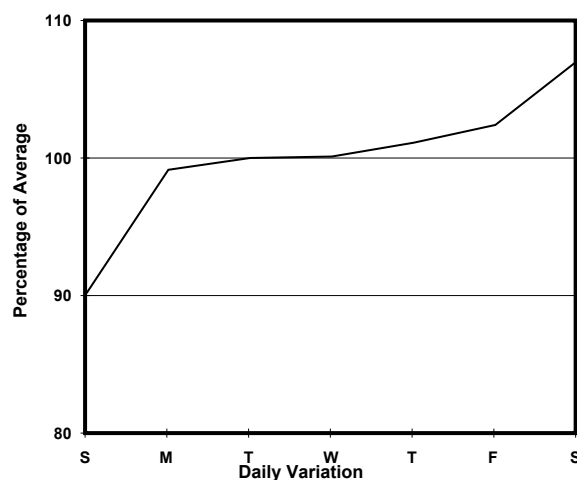
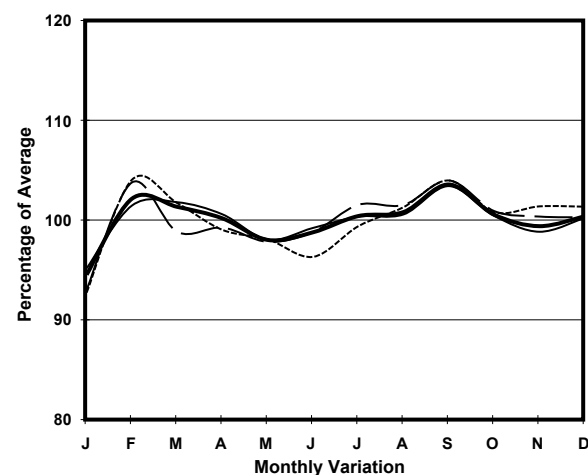


YEAR 2018  
CORE STATION 1003  
ROAD NETWORK MAJOR  
ROAD TYPE EXPRESSWAY

LINK ISLAND EASTERN CORRIDOR (from HEALTHY ST INT  
EASTERN END to TAIKOO SHING INT WESTERN END)



## 1. TRAFFIC FLOW VARIATION AND GROWTH



## 2. TRAFFIC CHARACTERISTICS (BY DIRECTION)

Parameter	All - Day	Mon. - Fri.	Sat.	Sun.
<b>EAST BOUND</b>				
A.A.D.T.	59120	60000	61870	54130
R 12 / 24 - %	66.7	68	64.4	61.8
R 16 / 24 - %	85.7	87	83	81.7
AM Peak Hour	0900-1000	0900-1000	0900-1000	0900-1000
One-way flow at AM peak hour	3340	3580	3270	2370
T - % (AM)	-	-	-	-
PM Peak Hour	1600-1700	1600-1700	1700-1800	1700-1800
One-way flow at PM peak hour	3580	3880	4160	3160
T - % (PM)	-	-	-	-
Prop.of commercial vehicles - 16 hr.	-	-	-	-
<b>WEST BOUND</b>				
A.A.D.T.	62820	63200	69350	56590
R 12 / 24 - %	70.7	71.9	68.6	66.5
R 16 / 24 - %	87.4	88.5	85.4	83.6
AM Peak Hour	0800-0900	0800-0900	0900-1000	0900-1000
One-way flow at AM peak hour	4410	4920	3920	3020
T - % (AM)	-	-	-	-
PM Peak Hour	1700-1800	1700-1800	1800-1900	1800-1900
One-way flow at PM peak hour	3730	3880	4110	3670
T - % (PM)	-	-	-	-
Prop.of commercial vehicles - 16 hr.	-	-	-	-

## 3. OTHER INFORMATION AND COMMENT